



**ANSF** Agenzia Nazionale  
per la Sicurezza  
delle Ferrovie

**ANSF** Agenzia Nazionale  
per la Sicurezza delle Ferrovie  
prot. n° 006309/2015  
28/07/2015

**Imprese Ferroviarie**

Loro sedi

**Soggetti Responsabili della  
Manutenzione**

Loro sedi

**Detentori**

Loro sedi

p.c. **ASSOFERR - Associazione Operatori  
Ferroviari e Intermodali**

**c/o ASSTRA**

Piazza Cola di Rienzo, 80/a

00192 ROMA

p.c. **RETE FERROVIARIA ITALIANA S.p.A.**

**Direzione Tecnica**

Piazza della Croce Rossa, 1

00161 Roma

**Oggetto:** Inconvenienti ai treni avvenuti nei Paesi Bassi correlati a non conformità dell'organo di trazione.

**Allegato:** Safety Warning NSA Netherlands about "Breaking of trains caused loosening hook pin draw gear." con relative foto.

Si trasmette in allegato il "Safety Alert", emanato dall'Autorità Nazionale per la Sicurezza dei Paesi Bassi (ILenT) attraverso il sistema informatico dell'ERA Safety Information System, relativo alla problematica in oggetto, a cui si rimanda per gli ulteriori dettagli.

Si invitano i Soggetti in indirizzo ad attivarsi nel rispetto dell'art. 5, comma 5 del Regolamento Europeo n. 445/2011, scambiando le informazioni necessarie ad evitare che gli eventi possano ripetersi, comunicando alla scrivente Agenzia se nel proprio contesto operativo siano già accaduti inconvenienti simili e indicando i provvedimenti adottati.

Si resta in attesa di un riscontro.

IL DIRETTORE  
ing. Amedeo Gargiulo

Agenzia Nazionale per la Sicurezza delle Ferrovie  
Piazza della Stazione, 45 50123 - FIRENZE Italia

Tel. +39 055 2989701 - 02 +39 06 41582379 +39 06 48880621 Fax +39 055 2382509  
www.ansf.it agenzia.sicurezza@ansf.it agenzia.sicurezza@pec.ansf.it  
codice fiscale 94165250484

# ALLEGATO

## Safety Warning

NSA: The Netherlands

Date: 10 July 2015.

## **Breaking of trains caused loosening hook pin draw gear.**

### **Incidents**

Date: 12 August 2013

Place: Sassenheim - NL

Breaking of passenger train type DDZ. The coaches of this train were recently renewed and put into service.



Date: 20 March 2014

Place: Tilburg - NL

Breaking of freight train with wagons loaded with dangerous good. The wagon was recently new build and put into service in the year 2014 / 2015.



Date: 10 jan 2015

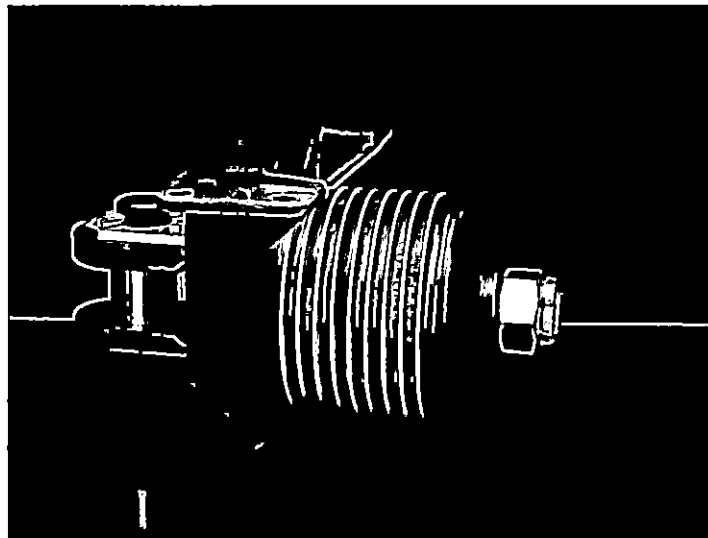
Place: Rhens near Koblenz - D

Breaking of freight train with container wagons keeper Touax.

No further information available.

### **Involved components**

Draw gear: general UIC-type like showed on picture



Maintenance rule: Annual check according to VPI rules

### First impression of inspection

The Dutch NSA has joined the inspections of investigation of the incidents in the Netherlands. There they found that with first incident that :

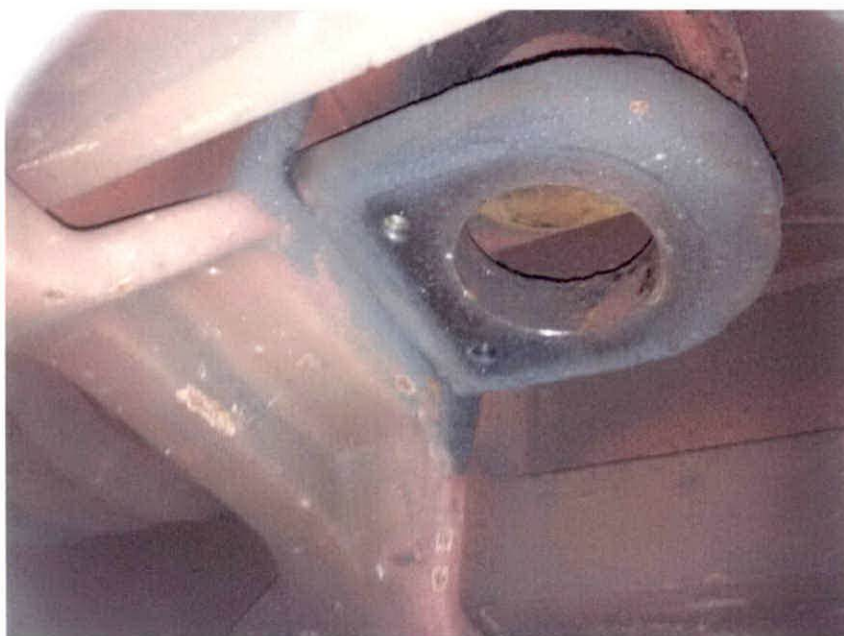
- A splint with wrong specifications has damaged the washer plate.



With second incident that:

- The washer plate was probably hit by the coupling during shunting at a marshalling yard (hill process)

With the third incident that:



The hook pin failed and the washerplates was not bend properly.



Measures taken so fare:

Short term:

- Check of al wagons in the same series of wagons build.
- Mounting the secure bold with bending moment and washer plates according to VPI-rules.
- Using splints with right specifications
- Using washer plates with thickness 1. 0 mm in stand off 0.8 mm

Question to other NSA's.

- Are there more incidents known about breaking of trains caused by failing hook pin in drawing gear.
- What are the results of the investigations
- What are the measures taken based on these incidents.

Please report your information to:

Dutch Inspectorate: [bart.olthoff@ilent.nl](mailto:bart.olthoff@ilent.nl) or [ruud.degroot@ilent.nl](mailto:ruud.degroot@ilent.nl)